

| Company Profile

PT AWINA RIKUDENKO SOLAR ENGINEERING INDONESIA

ARISE



PT AWINA RIKUDENKO SOLAR ENGINEERING INDONESIA

ARISE

PAGE OF CONTENTS

Page of Contents	2
Introduction of Rikudenko's Solar Power Plant	3
About the Company	4
Business Classification	5
Introducing the Board Members	6
Company Organization Chart	7
ARISE Office Space	8
ARISE Office Opening Ceremony	9
Reference I: Joint Research Cooperation Supported by ARISE	10
Reference II: About Rikudenko	14
Reference III: Rikudenko's Renewable Energy Projects	15
Reference IV: About AWINA	16
Reference V: Board Members Work Record	17
Reference VI: ARISE Gallery	18





• Maseguchi, Toyama Prefecture (1,500 kW), operated since April 2014

RIKUDENKO'S SOLAR POWER PLANT



• Kairyu, Toyama Prefecture (2,999 kW), operated since April 2014

ABOUT THE COMPANY

PT AWINA RIKUDENKO SOLAR ENGINEERING INDONESIA (ARISE) is a joint venture company between an Indonesian company and two Japanese company which was officially established on April 7th 2023. ARISE offers leasing of solar power generation equipment.

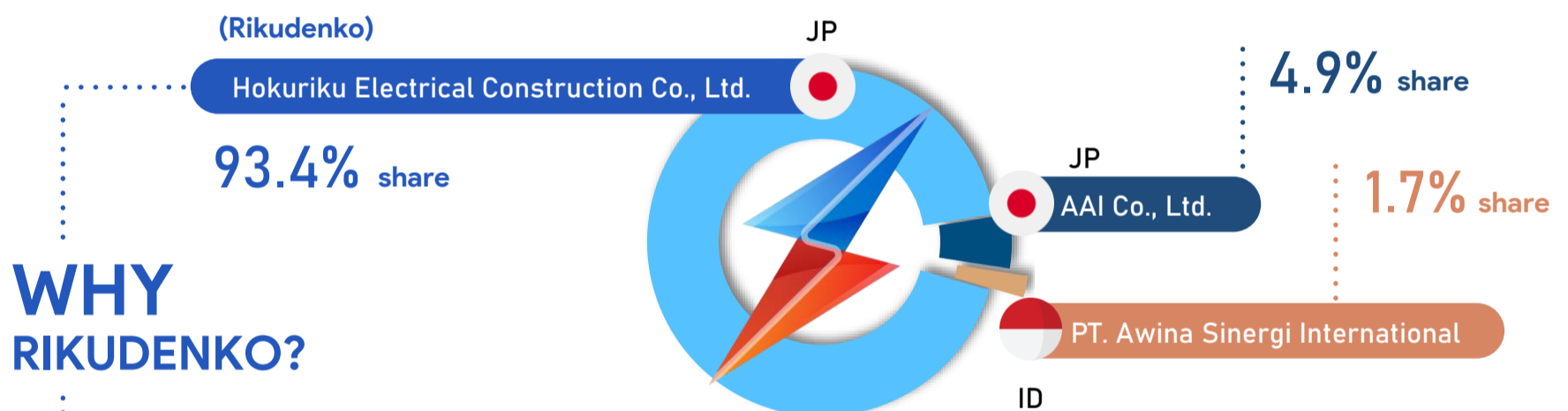
ARISE AIM

ARISE will contribute to the Republic of Indonesia's renewable energy policy and maximize resources to contribute and realize the country's steps towards carbon neutral.

ARISE TAGLINE

“YOU CAN COUNT ON US”

ARISE HOLDINGS



WHY RIKUDENKO?

- 78 years of experience in the Electrical Construction field
- Renewable Energy Power Generation in Japan
4 Solar Power Plant and 1 Hydroelectric Power Plant ^{※1}
- 567 Solar Power Plant construction in Japan (2012~2022)
 - Installed many major electrical components for Biomass and Wind Power Plant (excluding generators).
- Working with new and advanced technology
- New Technology Development Center
- 4300 qualifications (3.2 qualifications/employee)

OUR LOCATION



BUSINESS CLASSIFICATION

KBLI 77395

Activities of Rent and Lease Without Option Rights of Mining and Energy Machinery and Equipment

KBLI 71102

Activities of Engineering and Technical Consultation

KBLI 70209

Activities of Other Management Consultation

KBLI 43211

Electrical Installation

KBLI 35121

Operation of Electric Power Supply Installation



INTRODUCING THE BOARD MEMBERS

SASAKI Akito

Board of Director of ARISE

General Manager of Planning Department, Business Strategy Research Section
Hokuriku Electrical Construction Co., Ltd.



KITA Katsuhiko

Board of Director of ARISE



Senior Managing Director[※]
Hokuriku Electrical Construction Co., Ltd.

Ananda Setiyo Ivannanto

Board of Director of ARISE

President and Representative Director
PT. Awina Sinergi International



YAMAZAKI Isashi

Board of Commissioner of ARISE

President and Representative Director[※]
Hokuriku Electrical Construction Co., Ltd.



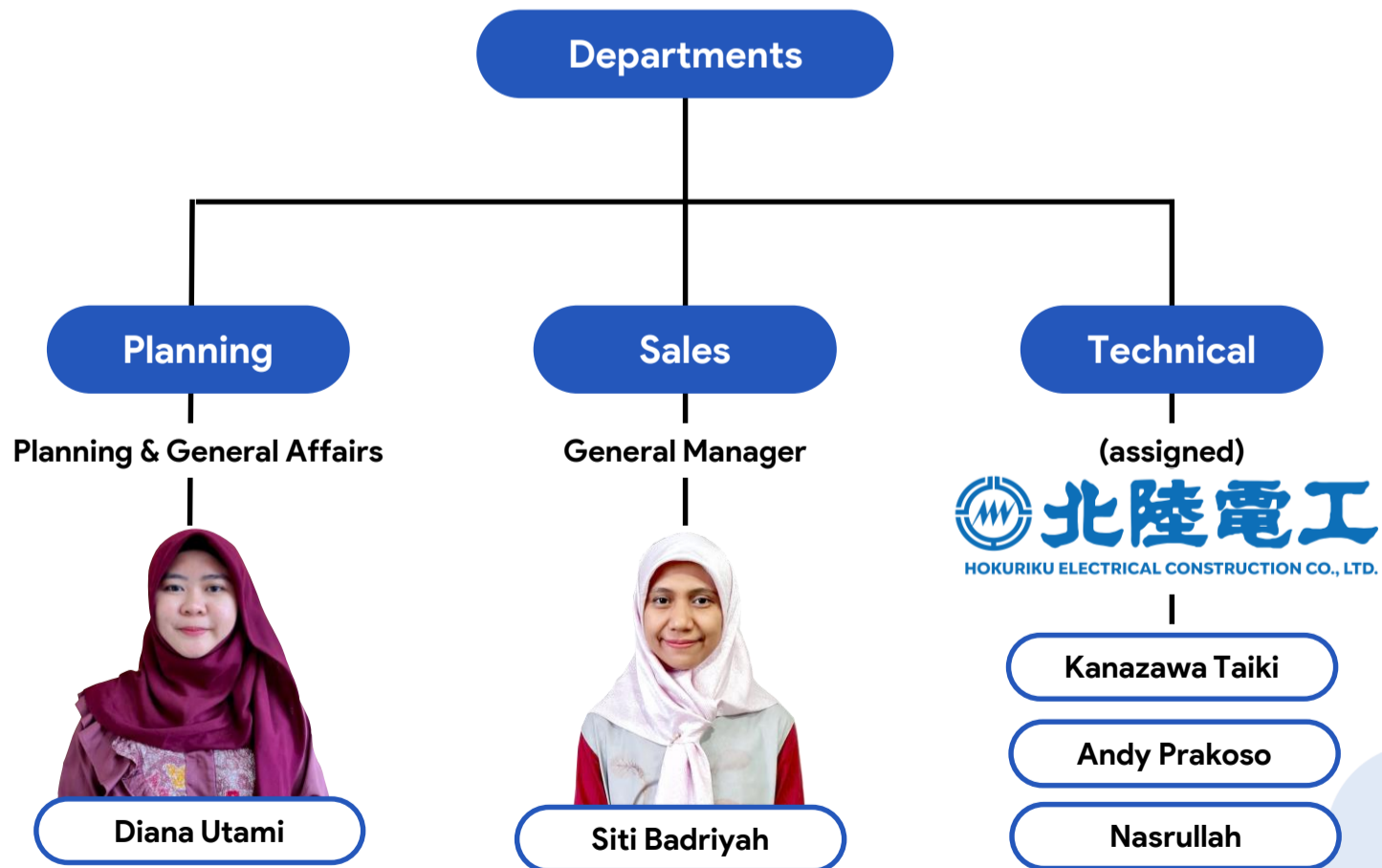
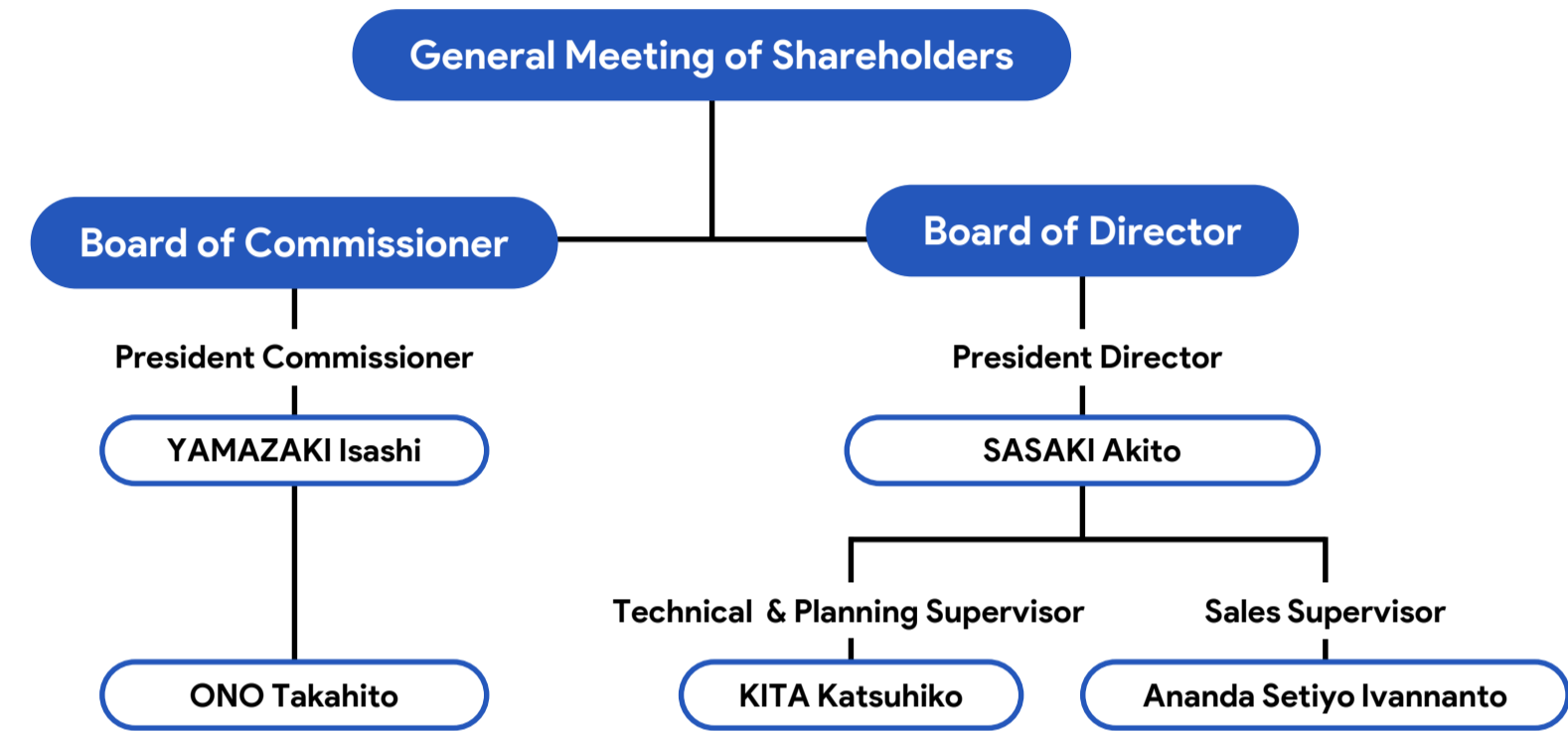
ONO Takahito

Board of Commissioner of ARISE

President and Representative Director
AAI Co., Ltd.



COMPANY ORGANIZATION CHART



ARISE OFFICE SPACE

SME Tower, 16th Floor
Jl. Jend. Gatot Subroto Kav. 94,
Pancoran,
South Jakarta 12780



Reception & Waiting Room



Staff Room



Meeting Room

ARISE OFFICE OPENING CEREMONY

December 15th, 2023



Opening Speech

Mr. SASAKI Akito - *President Director of ARISE* and Mr. KITA Katsuhiko - *Senior Managing Director of Rikudenko & BOD of ARISE*




(L-R) Rikudenko - Andy Prakoso; AWINA - Muhamad Fakhri; Planning Staff of ARISE - Diana Utami; Sales GM of ARISE - Siti Badriyah; President Director of ARISE - SASAKI Akito; BOD of ARISE - KITA Katsuhiko Rikudenko - Kakutani Soichiro; Rikudenko - Ajeng Larasati




ARISE Office Opening Ceremony Dinner with Company Partners

JOINT RESEARCH COOPERATION SUPPORTED BY ARISE

Rikudenko and AWINA is currently running a joint research project with a national university in Indonesia — Udayana University. ARISE, on behalf of Rikudenko and AWINA, is supporting on field inspection and supervision of the project.




SUSTAINABLE
DEVELOPMENT
GOALS



SDGs



Confidential Discussion Purpose Only
Reproduction of copies and disclosure to other parties is strictly prohibited

2023/02/23



Off-Grid Battery Swap EV Station with Flexible Solar Panels

JOINT RESEARCH COOPERATION
Hokuriku Electrical Construction Co., Ltd. and Udayana University Indonesia

Hokuriku Electrical Construction Co., Ltd. (2023) All rights reserved.

Documents Prepared and Presented by FURUMURA Mineo | KANEYOSHI Yuji | Andy Prakoso

Theme of the Joint Research Cooperation



Joint Research MoA Signing Ceremony on February 23rd, 2023



Discussion on the Implementation of the Joint Research at Udayana University



On Field Inspection at Udayana University with the Joint Research Team



Opening and Signing Ceremony



Presentation of Joint Research Concept & Battery Swap Station Demonstration



(L-R) President Director of ARISE - SASAKI Akito; Deputy Consul General of Japan - ADACHI Mayuko; President Director of Rikudenko - YAMAZAKI Isashi; Faculty Engineering of Udayana University - I Nyoman S. Winaya, Linawati, I Gusti Ketut Sukadana; AWINA- Siti Badriyah; Director of PT. Wiksa Daya Pratama - Agus Mukhlisin



Flexible Solar Panels Installation



Implementation of Batter Swap Station Using Solar Panel Energy

ABOUT RIKUDENKO

北陸電気工事株式会社



Company Name	Hokuriku Electrical Construction Co., Ltd. (Rikudenko)
Date of Establishment	October 1, 1944
Address	Konaka 269, Toyama City, Toyama Prefecture
Capital Stock	3.3 Billion Yen (IDR 360 Billion)
Net Sales (FY 2022)	53.3 Billion Yen (consolidated) (IDR 5.8T)
Number of Employees	1313 person (2024/04/01)
Number of Qualifications	4300 qualifications (2024/06/01)
Qualifications per Person	3.2 qualifications/employee
Public Market	Prime Market (Securities Code: 1930)

BRANCH OFFICE

TOYAMA

- Head Office
- Toyama Branch Office
- Takaoka Branch Office
- Niikawa Branch Office

ISHIKAWA

- Kanazawa Branch Office
- Nanao Branch Office
- Komatsu Branch Office

FUKUI

- Fukui Branch Office
- Tsuruga Branch Office

OSAKA

- Osaka Branch Office

AICHI

- Nagoya Branch Office

TOKYO

- Tokyo Branch Office

FIRST OVERSEAS BUSINESS IN INDONESIA

Established on April 2023.



RIKUDENKO'S RENEWABLE ENERGY PROJECTS

Rooftop Solar Power Plant

Location: Konaka, Toyama Prefecture

Capacity: 200 kW



Fixed Tilt Mounting Solar Power Plant

Location: Joganji, Toyama Prefecture

Capacity: 600 kW



Fixed Tilt Mounting Solar Power Plant

Location: Kairyu, Toyama Prefecture

Capacity: 2,999 kW



Fixed Tilt Mounting Solar Power Plant

Location: Maseguchi, Toyama Prefecture

Capacity: 1,500 kW



Hydroelectric Power Plant

Location: Konomoto, Fukui Prefecture

Capacity: 660 kW

※ still under construction

ABOUT AWINA

PT Awina Sinergi International is a Japanese-Indonesia Joint Venture established under the law of Indonesia, which is engaged in the business development and consultation of SDG's solutions to support Indonesia Net Zero Emission target, especially in the field of renewable energy, waste management, carbon neutral and business services.

Company Name	PT. Awina Sinergi International (AWINA)
Date of Establishment	February 14, 2018
Address	SME Tower 6th Floor, Jl. Jend. Gatot Subroto Kav. 94, Jakarta, Indonesia
Capital Stock	IDR 10.5 Billion

AWINA'S RENEWABLE ENERGY PROJECTS

#1

Installation of **small hybrid off-grid micro wind turbine and solar PV system** across Indonesia since 2010



University
Research



School



Hospital



Remote
Areas

#2

Project Team for **1 MW Rooftop Solar PV** of Smart Parking Gelora Bung Karno Jakarta for ASEAN GAMES 2018



BOARD MEMBERS

WORK RECORD



SASAKI Akito

1979	Hokuriku Electric Power Co., Ltd.	
2012	Hokuriku Electrical Construction Co., Ltd.	
	[Toyama Branch]	General Manager of Sales Department
2018	[Head Quarter]	General Manager of Sales Department
2020	[Head Quarter]	Executive Manager of Business Development
2022	[Head Quarter]	General Manager of Planning Department (Business Strategy Research Section)



KITA Katsuhiko

1984	Hokuriku Electrical Construction Co., Ltd.	
2015	[Tokyo Branch]	Executive Vice Branch Manager
2018	[Head Quarter]	Director Manager of Indoor Wiring Department
2020	[Head Quarter]	Senior Executive Manager of Indoor Wiring Department
2021	[Head Quarter]	Managing Director
2023	[Head Quarter]	Senior Managing Director



Ananda Setiyo Ivannanto

2010	A-WING International Co., Ltd.	
	[Representative Office - Logistics Japan]	
2013	PT AWINA SINERGI INDONESIA	President and Representative Director
2018	PT AWINA SINERGI INTERNATIONAL	President and Representative Director
2018	AAI Co., Ltd.	Director



YAMAZAKI Isashi

1985	Hokuriku Electrical Construction Co., Ltd.	
2018	[Takaoka Branch]	Executive Vice Branch Manager
2019	[Head Quarter]	Director of Management Department
2020	[Head Quarter]	Senior Executive Manager of Planning Department
2021	[Head Quarter]	Managing Director
2023	[Head Quarter]	President and Representative Director



ONO Takahito

2012	A-WING Co., Ltd. [Establishment]	Director
2014	A-WING Co., Ltd.	President and Representative Director
2018	A-WING International Co., Ltd.	President and Representative Director
2019	AAI Co., Ltd.	Director
2021	AAI Co., Ltd.	President and Representative Director

ARISE GALLERY

December 7th, 2022



Joint Venture Agreement Signing Ceremony

(L-R Above Row) AWINA - Diana, Hirayama, AAI - Nakamura; President Director of PT. Awina Sinergi International - Ananda Setiyo Ivannanto, President Director of Hokuriku Electrical Construction Co., Ltd. - YANO Shigeru; President Director of AAI Co., Ltd. - ONO Takahito; AWINA - Siti; Rikudenko - Yamazaki, Ajeng, Sasaki
(L-R Below Row) AWINA Members

April 3rd, 2023



ARISE Deed of Establishment Signing Ceremony

(L-R) President Director of ARISE - SASAKI Akito; Rikudenko - Ajeng Larasati, Planning Staff of ARISE - Diana Utami;
Sales GM - Siti Badriyah; TMI Law Office Attorney - SAITO Eisuke



PT AWINA RIKUDENKO SOLAR ENGINEERING INDONESIA
YOU CAN COUNT ON US.



SME Tower 16th Floor
Jl. Jend. Gatot Subroto Kav. 94, Pancoran,
South Jakarta 12780
INDONESIA